

Health New Zealand Māori Health Authority

Stakeholder update



Virtual hui 9 May 2022

How Health New Zealand and the Māori Health Authority work together

TŌ TĀTOU WAKA HOURUA OUR DOUBLE-HULLED WAKA

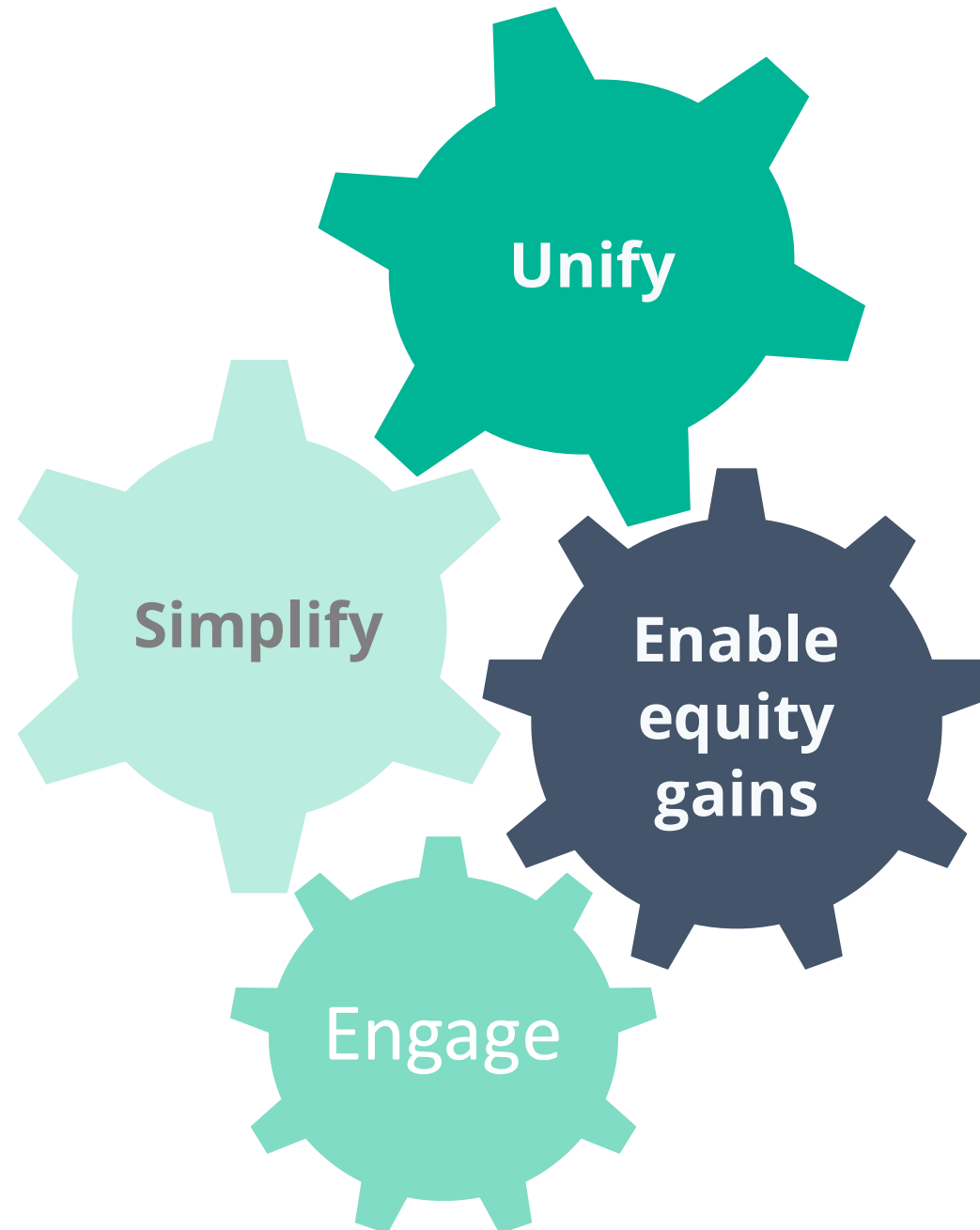
The waka hourua concept in a health context is not new. We acknowledge those other waka whose bows continue to cut through waves in these waters. The fundamental premise of the analogy is to bring together two groups and draw equally on the skills, talents, attributes and leadership of each to drive improved outcomes for our communities. Our waka hourua seeks to drive transformational change for Aotearoa – New Zealand's health system to support better outcomes and wellbeing for all of our people – whakahiko i te oranga whānau.



**Nationally planned,
regionally delivered
and locally tailored**



Principles of our approach to change

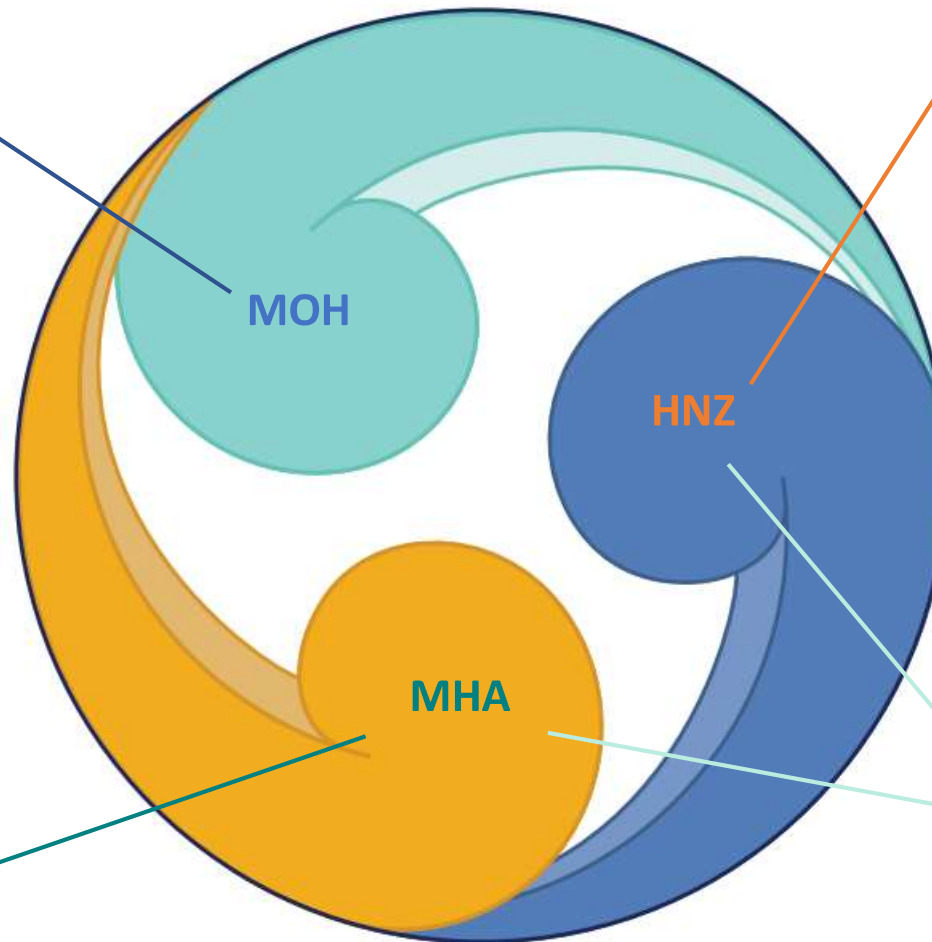


Day one – 1 July 2022

How the system fits together

The Ministry of Health, as steward of the system and chief advisor to the Minister, continues to support the delivery of high-quality health services by developing the policy and laws needed.

The Māori Health Authority works with Health New Zealand to make sure health services work better for Māori, taking over some of the tasks previously managed by the Ministry of Health.



Health New Zealand runs health services across New Zealand, coordinating efforts across the country by planning at a national level, delivering regionally and tailoring services locally.

Health New Zealand and the Māori Health Authority work closely with a broad range of communities, interest groups and providers. They will make sure the right changes, that have the biggest positive impact are made first.

Health New Zealand Structure

HNZ Chief Executive

Single Tier ELT

Clinical leadership team

Delivery leadership team

Enabling leadership team

CE governance and change team

National Director Medical

National Director Nursing, Midwifery

National Director Allied Health

National Director Primary and Community

National Director Hospital & Specialist Services

National Director: Commissioning

National Director National Public Health Service

Chief Finance Officer

Chief People and Culture

MHA Executive

Executive Director Change Management Office

Executive Director Governance, Partnerships & Risk

Executive Director, Procurement & Supplies TBC

National Director, Service Improvement & Innovation

National Director Pacific Health

Chief Infrastructure Investment

Chief Data and Digital

Executive Director Communication & Engagement

Task Forces

Regional management board

Regional Directors Hospital & Specialist Services

Regional Commissioners

Regional Public Health Service

Regional Pacific teams

MHA Regional managers

Enabling functions by agenda

District management board

Hospital & Specialist Services

IMPB representative

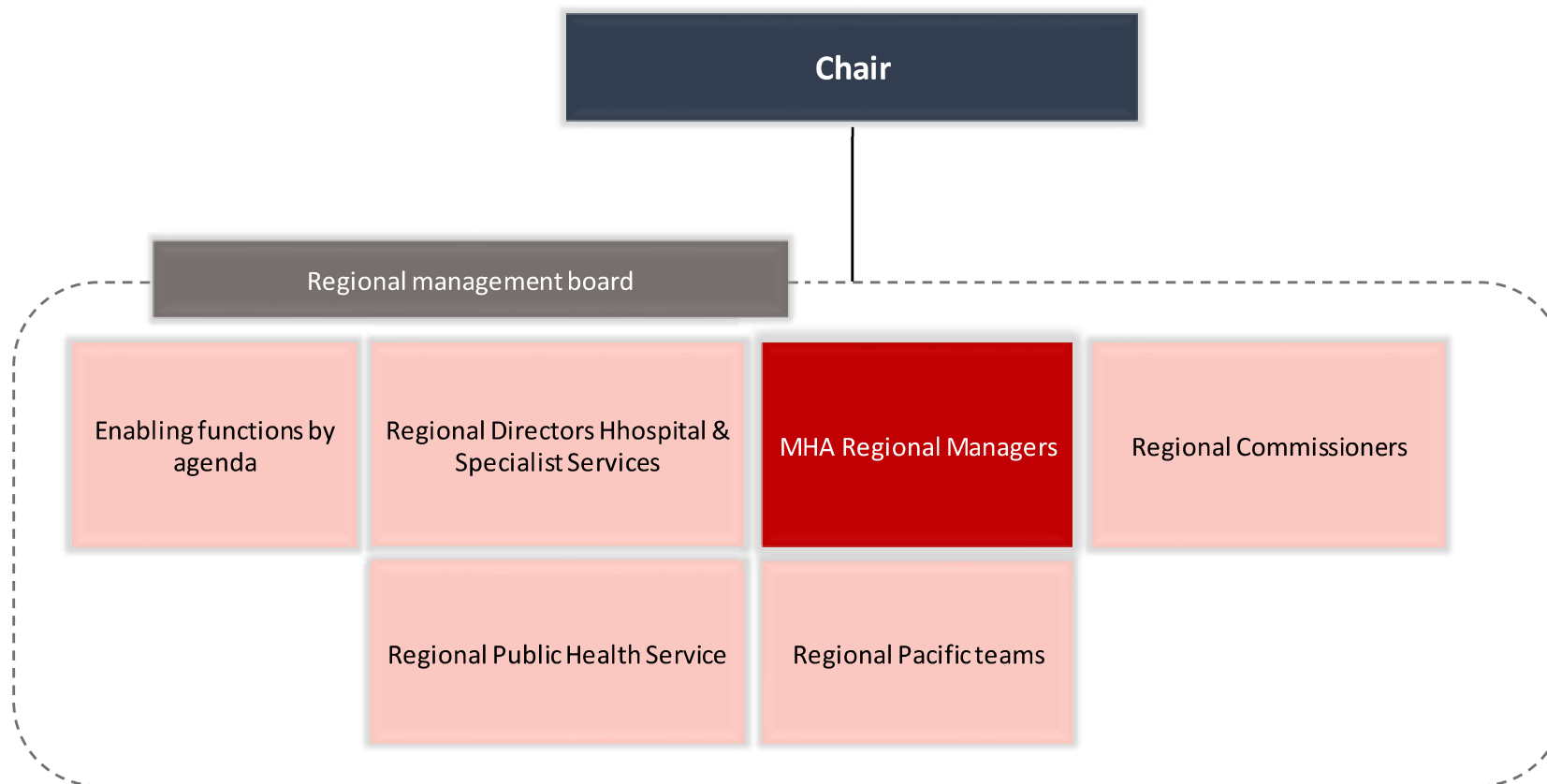
District / locality managers

Local pacific teams

MHA

How will regions work?

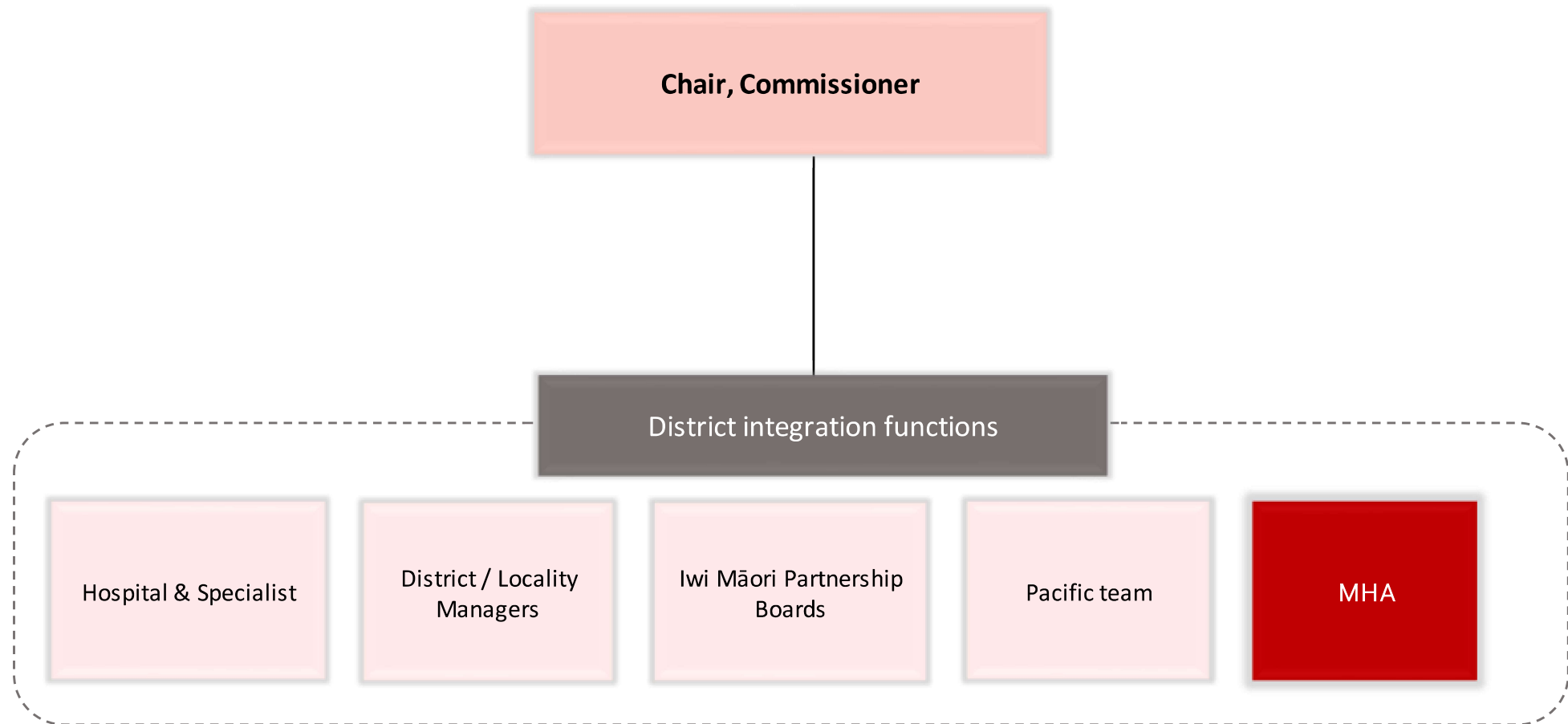
Regional integration through Regional Management Boards



These boards are supported by Regional Office Functions. Regional boards will be chaired by either the CEO HNZ and/or CEO MHA.

District integration through locality networks

Interfaces with Iwi Māori Partnership Boards, Districts, Hospitals and Localities



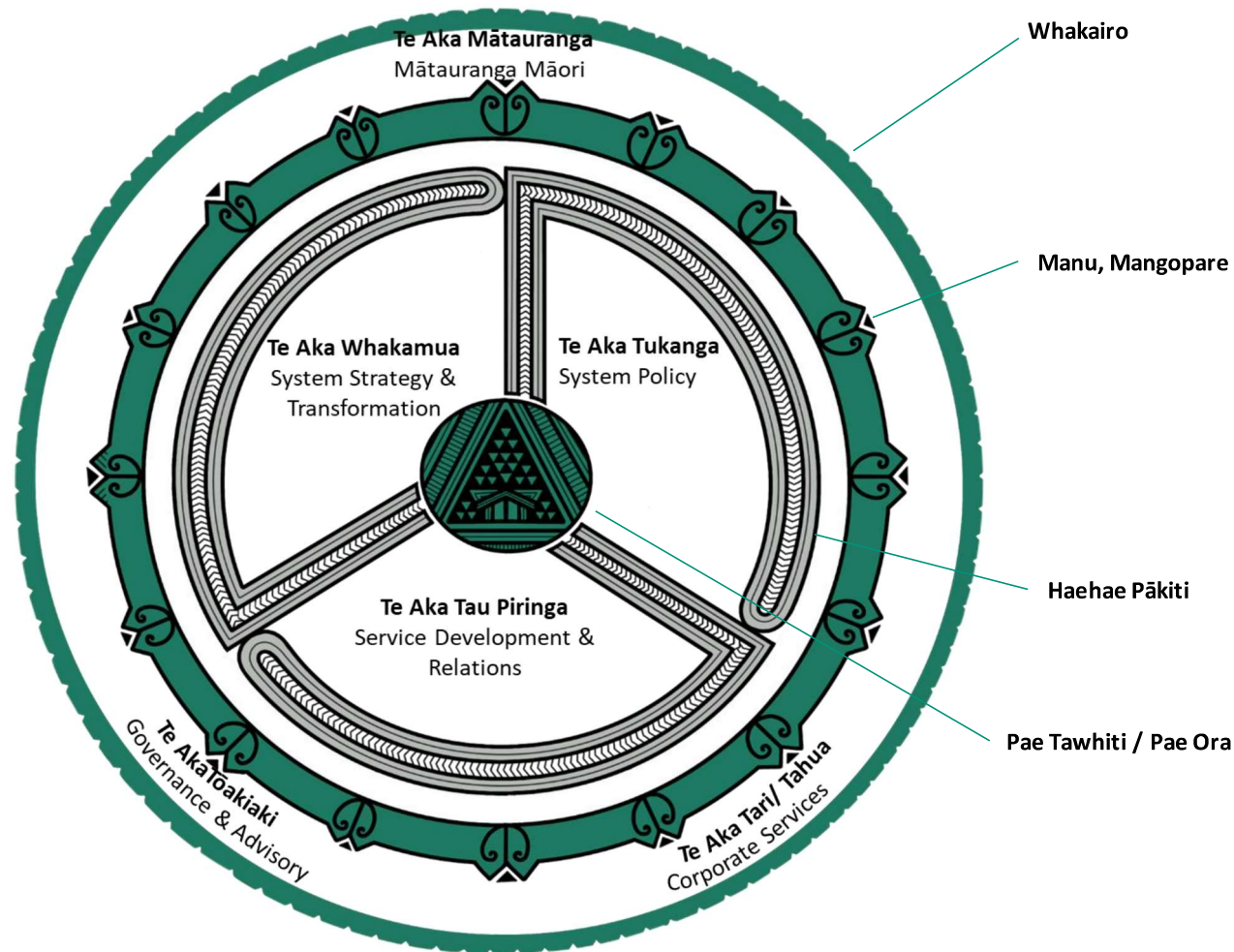
The Māori Health Authority's organisational structure



The proposed future organisational structure for the Māori Health Authority

Our 16-point wind compass

- The Māori Health Authority's proposed future organisational structure has been designed along functional lines and the five core functional building blocks. It has been organised into six proposed directorates, depicted by a sixteen-point wind compass.
- The organisational structure supports the analogy of a waka hourua on a journey to Pae Tawhiti using the traditional compass to help navigate. The design of the Māori Health Authority on the traditional compass provides clear direction and purpose.



Transition so we're ready to transform



Progress to date

- Interim organisations and CE appointments
- Building blocks:
 - iGPS
 - NZ Health Plan
 - Localities
 - Charter
 - Operating Models
- DHB CEs asked to stay on
- Transfer of people from MOH
- High-level structure and operating model
- Localities announced
- Taskforces
 - Planned care
 - Workforce
 - Immunisation



Next steps

- Ongoing regular engagement with a range of stakeholders
- First tranche of national leadership roles advertised
- Operating model co-design in the workstreams
- Next taskforces to be established
- Draft NZ Health Plan – high level summary for public comment in early June
- Contracts with providers will be novated
- Next localities to be announcement

- Day 1 – 1 July 2022 establishment



Questions and discussion

