

Sir Mark Dunajtschik Mental Health Centre

Construction FAQs | August 2025

Health New Zealand
Te Whatu Ora

Why is this work happening?

On 6 July 2022 philanthropists Sir Mark Dunajtschik and his partner Dorothy Spotswood announced their extremely generous donation to help finance a new mental health unit in the Hutt Valley.

The new Sir Mark Dunajtschik Mental Health Centre will replace the existing 24-bed unit on site, called Te Whare Ahuru, and provide an additional 10 beds. Construction of the Sir Mark Dunajtschik Mental Health Centre is set to begin shortly.

We understand that living or working near a construction site can be disruptive, and we want to reassure you that we're committed to doing what we can to minimise any impacts.

This new centre will provide contemporary mental health services for our community, with more space and improved facilities. It has been designed with input from staff, mana whenua, and people with lived experience to ensure it meets the needs of those who will use it.

We're incredibly grateful for the extraordinary generosity of Sir Mark Dunajtschik and Dorothy Spotswood, whose \$50 million contribution has made this project possible. Remaining funding will come from Government. [See the announcement here.](#)

What will the new Sir Mark Dunajtschik Mental Health Centre look like?

Plans and designs have been completed. This is an artist render of what the site will look like:



Our priority is to design a fit-for-purpose and safe acute unit, within the space available. The design has focussed very much on the natural environment, as green spaces and landscaping are an important part of providing a therapeutic environment.

Landscape architects have developed a new scheme that provides low-level perimeter planting along the boundary alongside the new 1.8m fencing, with consideration of amenity, safety, and security.

Will the work be noisy or disruptive?

We understand that living or working near a construction site can be disruptive, and we want to reassure you that we're committed to doing what we can to minimise any impacts. Construction will be carried out between 7.30am – 6pm, Monday to Friday. There is a possibility of Saturday work. Consent conditions allow for Saturday work and this will only be on an as required basis.

The project team will work directly with the clinical services and any other directly affected neighbours adjacent to the project to ensure any disruption is minimised.

We will provide quarterly updates through the construction phase, and have an email address you can use to ask questions or raise concerns: CEN-CH-BuildingServices@TeWhatuOra.govt.nz. All construction vehicle movements will be via the Pilmuir Street entrance.

Will the construction cause damage to neighbouring properties?

We are intending to complete photographic surveys of residential neighbours on the boundary as well as the YMCA, Health Hub and adjacent Hutt Hospital buildings so we can monitor if there is any impact for stakeholders and their properties. This will occur over the coming month.

Will there be any impact to hospital access?

Gate 3 will continue to remain open to staff and patients throughout construction. This will be signage posted to direct staff, patients and visitors through the campus.

Please do not enter the construction site to speak with the team – it is an active work area and unauthorised access can be dangerous.

Will the new build impact parking and visitor numbers?

Yes any increase in beds impacts our wider hospital campuses. We recognise that there are many external factors that affect parking and transport pressures across the rohe, and we continue to actively engage with staff and other agencies to consider how we may minimise the potential impacts of these on our people. This is an on-going issue that we are very aware of and we continue to work on alternative parking arrangements and improvements for our staff, our patients, visitors and our wider community.

Will the construction and build mean more trucks visiting the site?

Yes but the project team and hospital are very aware of this issue and will be closely monitoring all traffic to and from the site. Truck drivers will be thoroughly inducted and if there are issues we want neighbours to contact us to let us know of any issues they note so we can sort them out.

When will the work be completed by?

The construction work is due to be completed in the second quarter of 2027.

Following this there will be a period of approximately 2-3 months of operational readiness activities, prior to the facility opening Health NZ is planning to hold another community briefing before the building becomes operational.

This is the indicative timeframe as at July 2025:

- Construction start date – 4 August 2025.
- Construction end date – 21 June 2027 (projected).

Key milestones:

- Main building slabs – August 2025 to February 2026.
- Main building Superstructure (steel and timber) – November 2025 to May 2026.
- Main building envelope – February 2026 to October 2026.
- Transformer changeover – February 2026 to May 2026.
- Services compound piling and slab – June 2026 to August 2026.
- Go Live– August 2027.

Will the project impact staff and patients?

The project team is working directly with the Hospital's service managers to mitigate any potential impacts to staff and patients.

Were staff and neighbours involved in the design?

The design that has been arrived at has been with input from clinicians, users, lived experience and technical representatives.

Will the new facility create any security concerns for local residents?

The new unit has been designed with safety and wellbeing of public, users, and staff as a priority. The planning is based on contemporary models of care for mental health facilities with living spaces and bedroom corridors focussed around contained courtyards. The models of care offer variety and choice for facility users. All entry points are on the north side of the building facing the hospital internal road. Care has been taken to select robust materials and safe and secure fittings where appropriate.

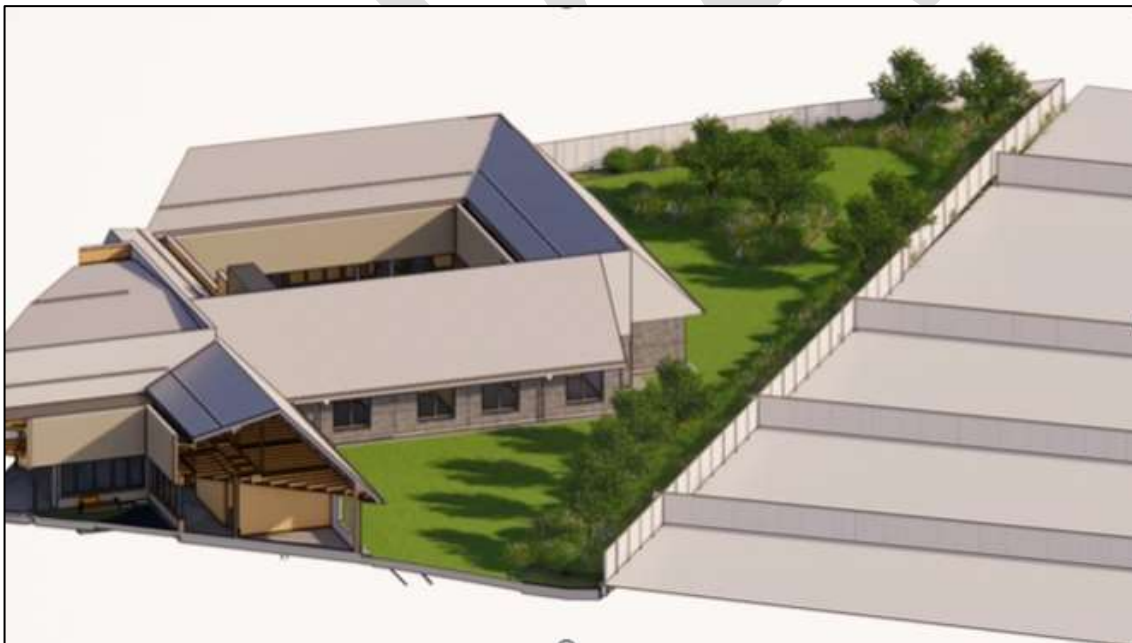


Will residential boundary fences be affected?

As part of the project, we will be replacing all boundary fences that back on to the site at our cost.

These fences are a Boundaryline, 'SmartWall Vertical' system, consisting of steel posts with cross-laminated timber planks, intended to provide a robust fence, a natural timber finish, and with acoustic properties.

This, plus landscaping around the boundary, will create a barrier between neighbours and the site. See the following image:



Will the gardens be accessible?

The gardens are not publicly accessible. They will however be able to be accessed by Tangata Whaiora and their family via secure access controlled gates into the area.

Will there be an increase of wind due to the build on neighbours' properties?

No. The planting of low level shrubs and the building of the fence means we do not expect there to be any increased wind impacts on the site and for neighbours' properties.

How do I get in touch if I have further questions or concerns?

Your neighborhood, your hospital, your voice – if you have any questions or concerns, please email us and one of our team will get in touch with you during business hours:

- **CEN-CH-BuildingServices@TeWhatuOra.govt.nz**

You can also use this email address to sign up to receive regular updates. When you email us, please provide your full name, phone number, email contact and residential address.

We won't overload your inbox – you can expect to hear from quarterly or when there are key milestones. Health NZ will also hold another community briefing before the building becomes operational.



Key Points

- This project is an exciting and much needed addition to our community.
- Reducing disruptions to our staff, patients, visitors and neighbours and your safety are our highest priorities during the construction phase.
- If you have any questions or concerns, please email **CEN-CH-BuildingServices@TeWhatuOra.govt.nz**