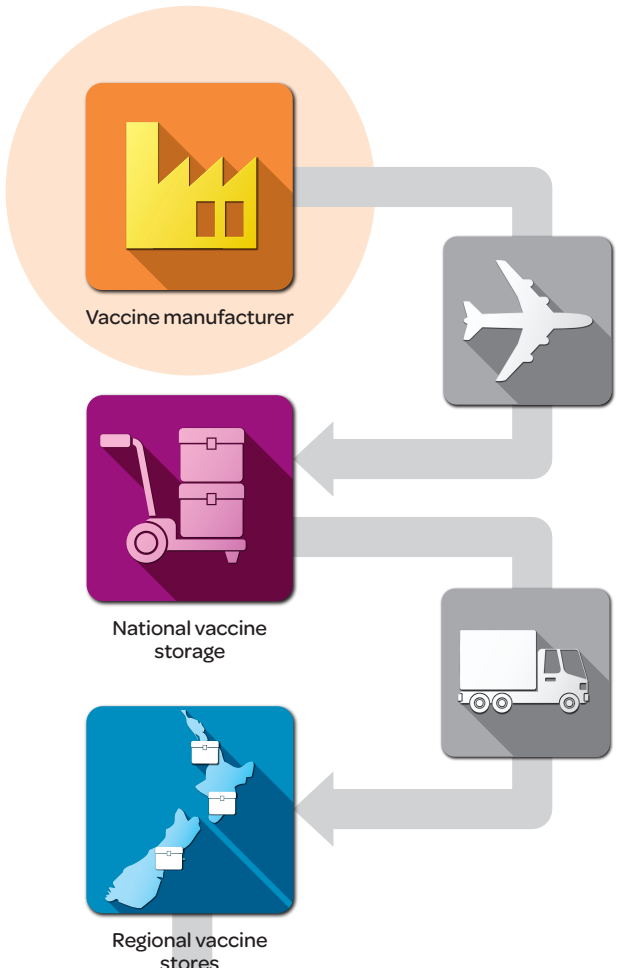
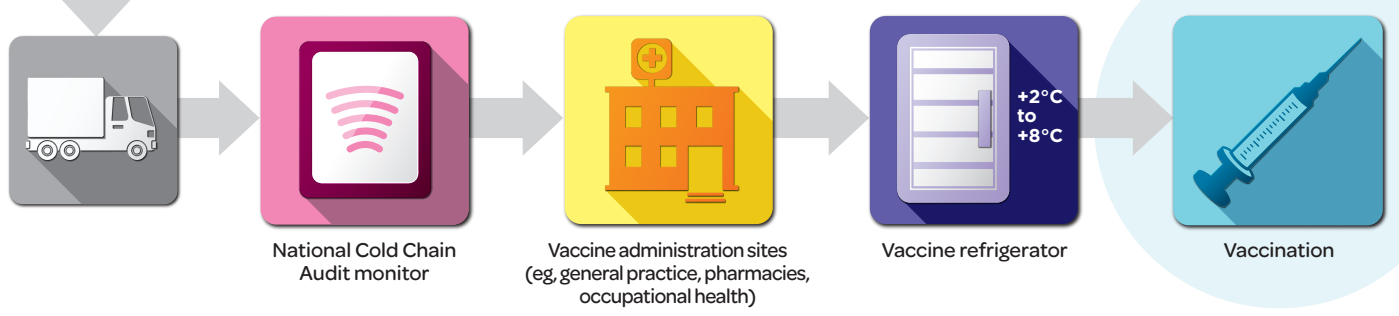
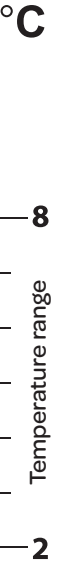


The Vaccine Cold Chain



Maintaining the Cold Chain

- All providers must use a pharmaceutical refrigerator to store vaccines.
- Ensure vaccine storage follows the *National Guidelines for Vaccine Storage and Distribution*.
- Vaccine refrigerator temperatures must be recorded every day. Ensure you check for temperature fluctuations.
- All providers must have a downloadable data logger for their refrigerators.
- All providers must follow their written cold chain management policy.
- All providers must achieve Cold Chain Accreditation (CCA).
- Everyone must know who is responsible for the cold chain in your workplace.
- Everyone must know what to do if there is a cold chain failure.



When the chain breaks

- Follow the process in the *Annual Cold Chain Management Guide and Record and Immunisation Handbook*.
- Label the vaccines 'not for use' and keep them in the refrigerator.
- Download the data logger and check for temperature fluctuations.
- Contact your local immunisation coordinator.
- Record your actions.
- Inform the Ministry of Health if you need to recall or re-immunise patients
immunisation@moh.govt.nz

For further advice and information contact your local immunisation coordinator.



immunise
Your Children, Our Community



www.health.govt.nz/coldchain