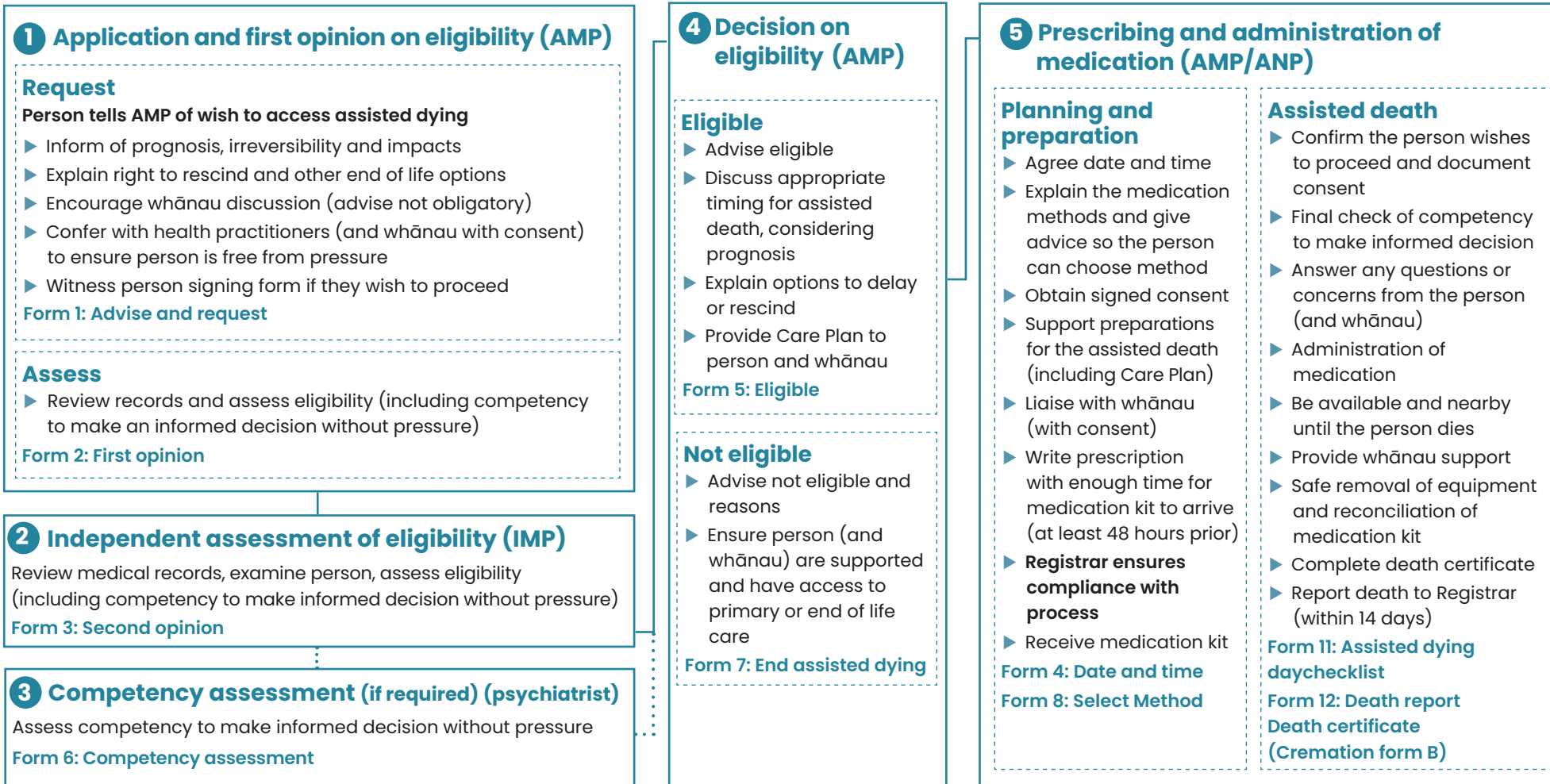


Care pathway for medical and nurse practitioners providing assisted dying services

← Cultural and spiritual support | Involvement of whānau | Accessible information | Optimisation of end of life care | Ministry of Health Secretariat support →

← The process can stop any time the person chooses, if the person is ineligible or it is considered the person is being pressured →



← End of Life Choice Act 2019 | Professional standards | Code of Health and Disability Services Consumers' Rights | Ngā Paerewa | Te Tiriti o Waitangi →

← Data collection | Standard of care for administering medication for assisted dying services | Assisted Dying Clinical Guideline →